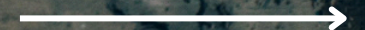


Searching for the Secrets to **Water Repellence** for **Durable and Long-Lasting** **Construction Quality?**

Learn How





Dampness and **Leakages** are major issues faced by construction projects due to the monsoon.

Thus **Water Repellence** becomes crucial for the durability and longevity of construction materials.

Swipe to learn why 



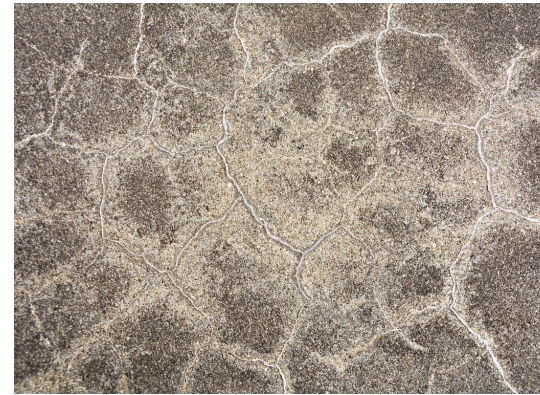
Rainwater, moisture and **humidity** affect the interiors and exteriors of your construction in different ways:

Interior

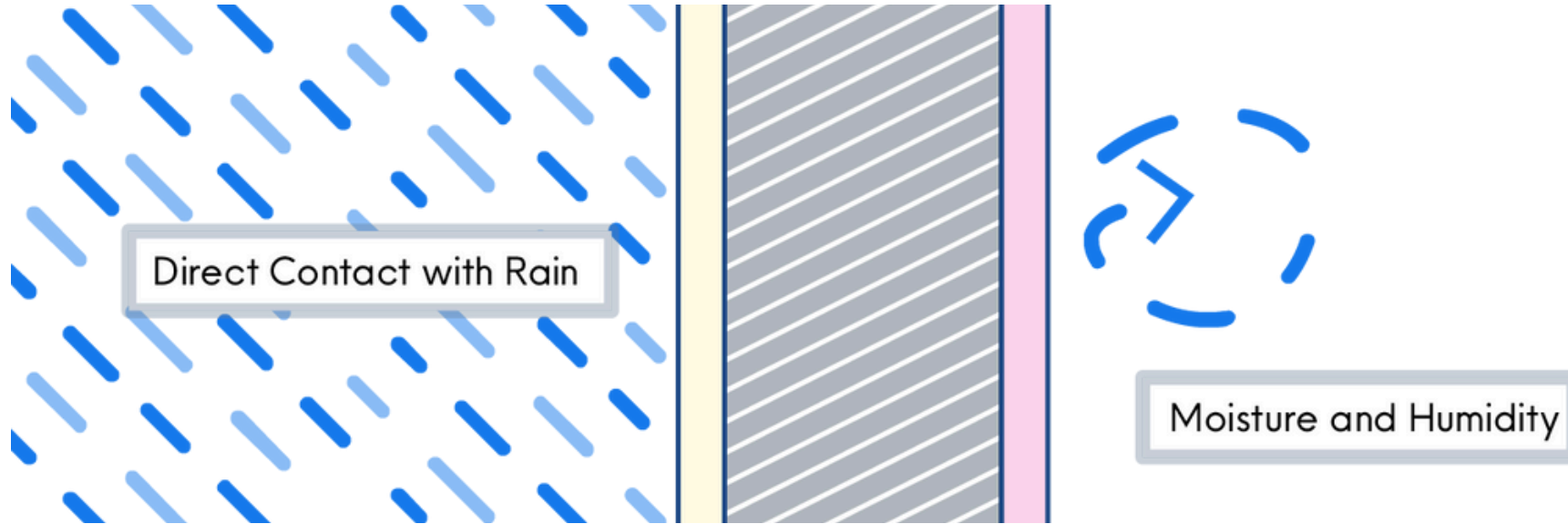


- Ceiling stains
- Peel-offs of coatings from walls
- Mold growth
- Choking of Substrate

Exterior



- Roof leaks
- Efflorescence
- Foundation cracks
- Structural issues due to Water Ingress



PREVENTIVE MEASURES INCLUDE:

- Regular Maintenance
- Proper Drainage Systems.
- **Using Silicone Additives (Silanes)**

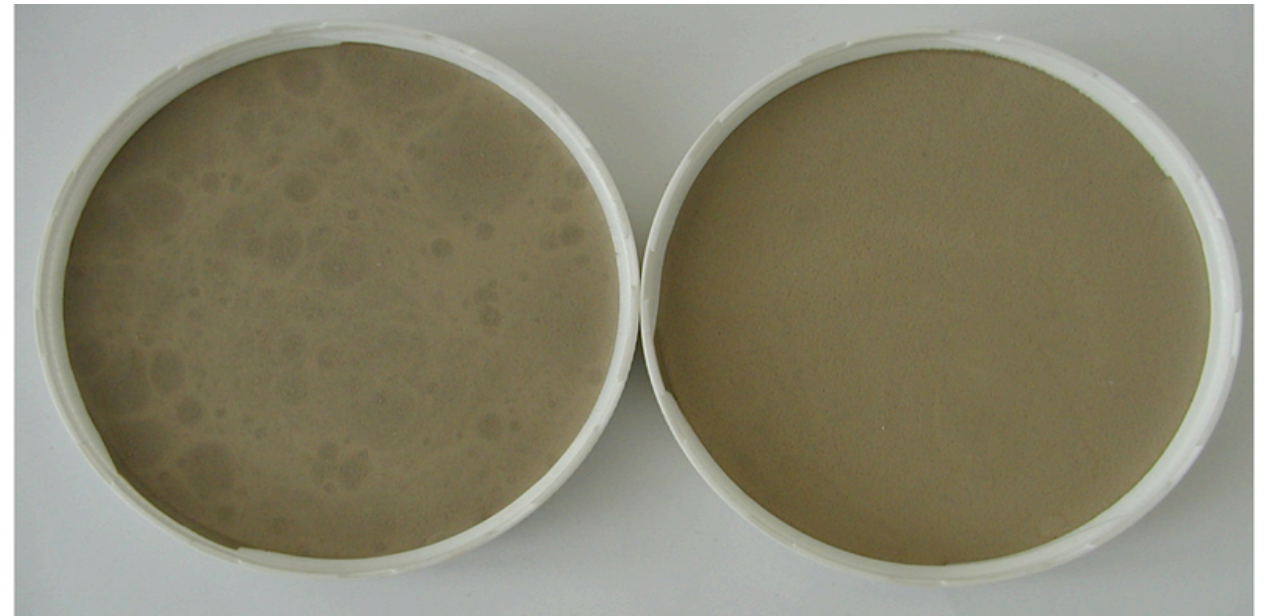
[Learn More](#) →



WHY SILANES?

Silicone additives, or Silanes, improve substrate wetting and minimize defect.

Due to its powdered form, it is used in cement-based dry mixes like **wall putty** and **plaster**, which form the exterior coats of construction projects.



Without Powdered
Silane

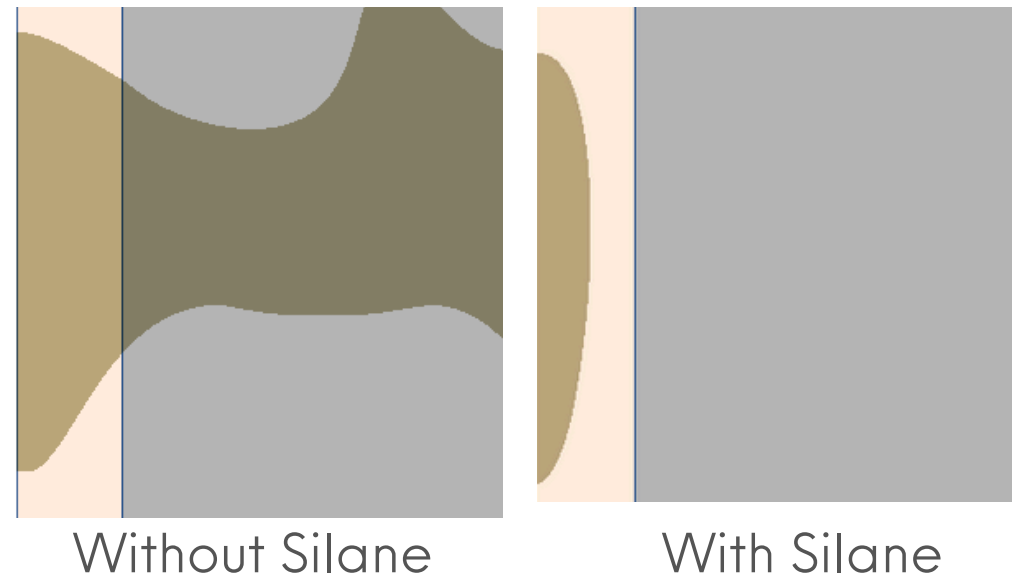
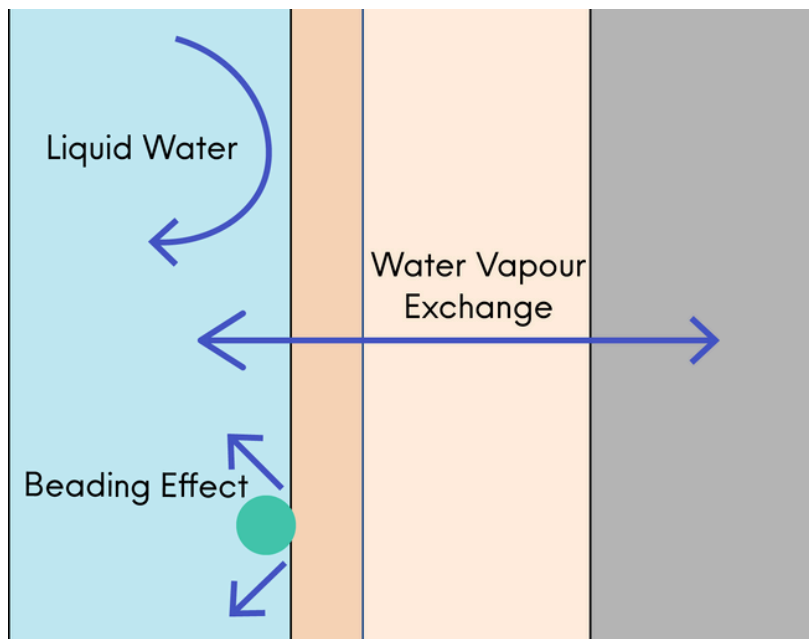
With Powdered
Silane

[Learn How](#) 



Silanes help form a protective layer for your substrate so that moisture doesn't penetrate through them.

Due to **silicone's hydrophilic nature**, when it comes in contact with water it attaches itself to water molecules so that they cannot travel further inside.



[Know More](#)



OUR RECOMENDATION FOR PERFECT WATER REPELLENCE

Powdered Silane

A water repellent designed to enhance the performance of cement-based drymixes, providing durability and efficiency.

Applications

- Cement-based mortar
- Aereated concrete
- Calcium silicate boards
- Non load bearing concrete
- Grouts

CONNECT WITH US | **YOUR NEEDS
OUR EXPERTISE
POSSIBILITIES**

Let's Collaborate For Your

Innovation Needs | Product Information

Sample Requests | Technical Information

Email | solutions@optimeglobal.com

Web | optimeglobal.com

24/7 | [+91 8591-933-123](tel:+918591933123)

